

A ct

R esponsibly

T oday



**In what ways
does Art
speak to us?**

“Girl with A Pearl Earring” by Johannes Vermeer



**Sometimes artists
use symbols
in their work**

“The Persistence of Memory” by Salvador Dalí



Clocks = Time & Memory are fluid

**A symbol
is a picture,
color, or object
that shows
an idea or a feeling.
It helps us
understand a message
without many words**

“Sunflowers” by Vincent Van Gogh



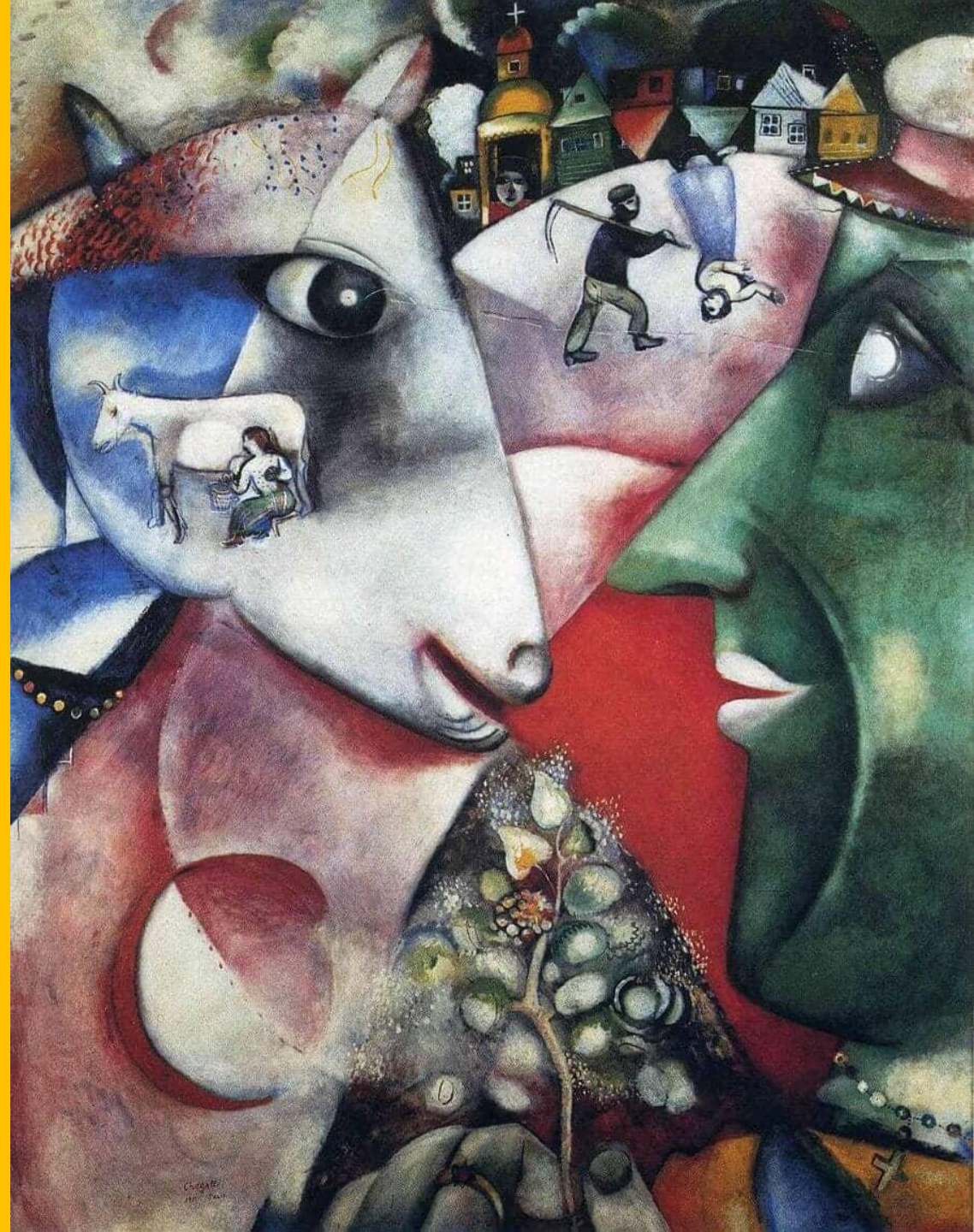


Sunflowers = Life, Hope, Gratitude

How to spot Symbols in Art:

1. Look at the colors

“I and the Village” by Marc Chagall
is all about the artist’s childhood in a Russian village





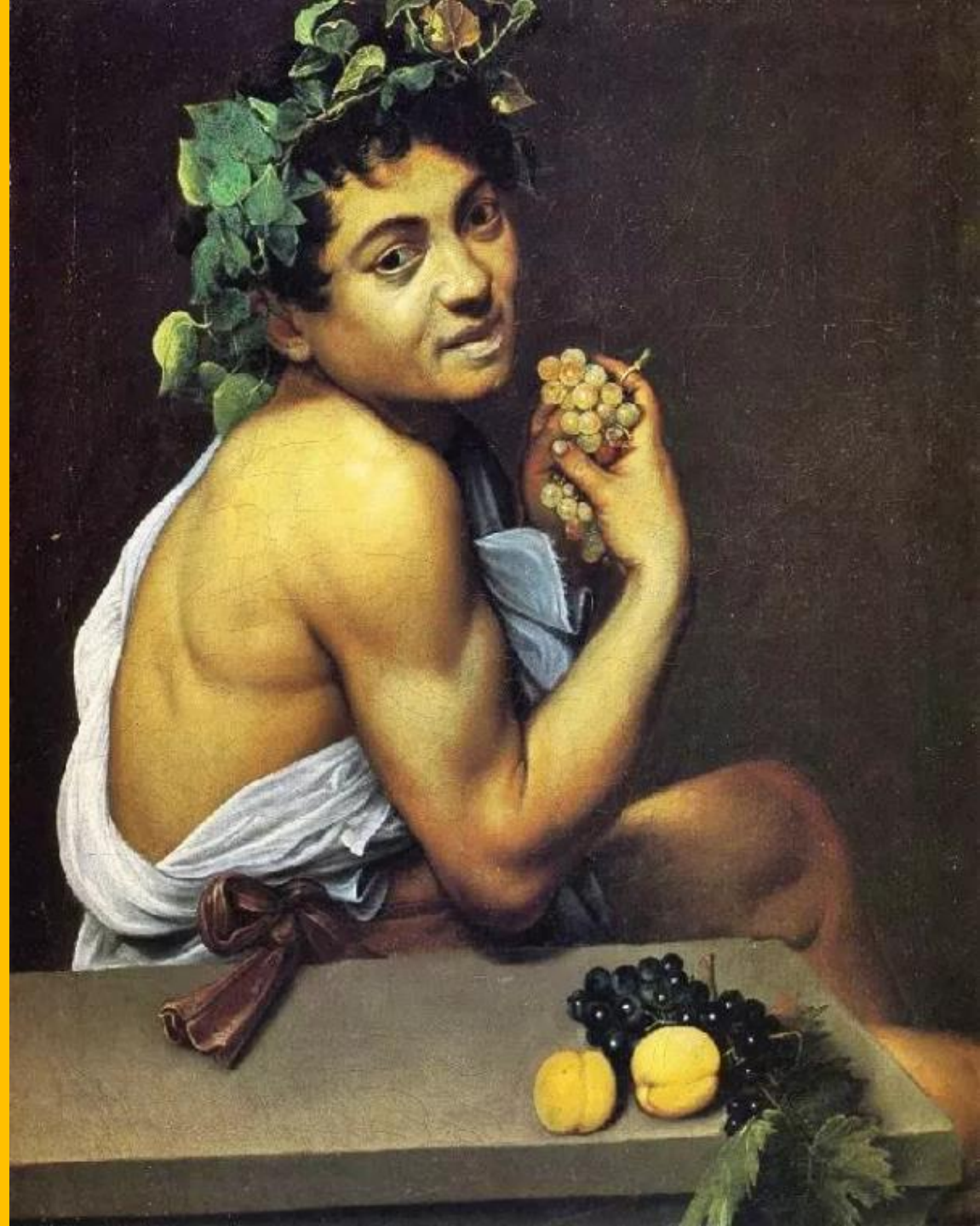
Colors can show feelings

Red = strong feelings, Blue = calm or sad, Green = nature

How to spot Symbols in Art:

2. Look at objects

“Shelf portrait as Bacchus” by Caravaggio





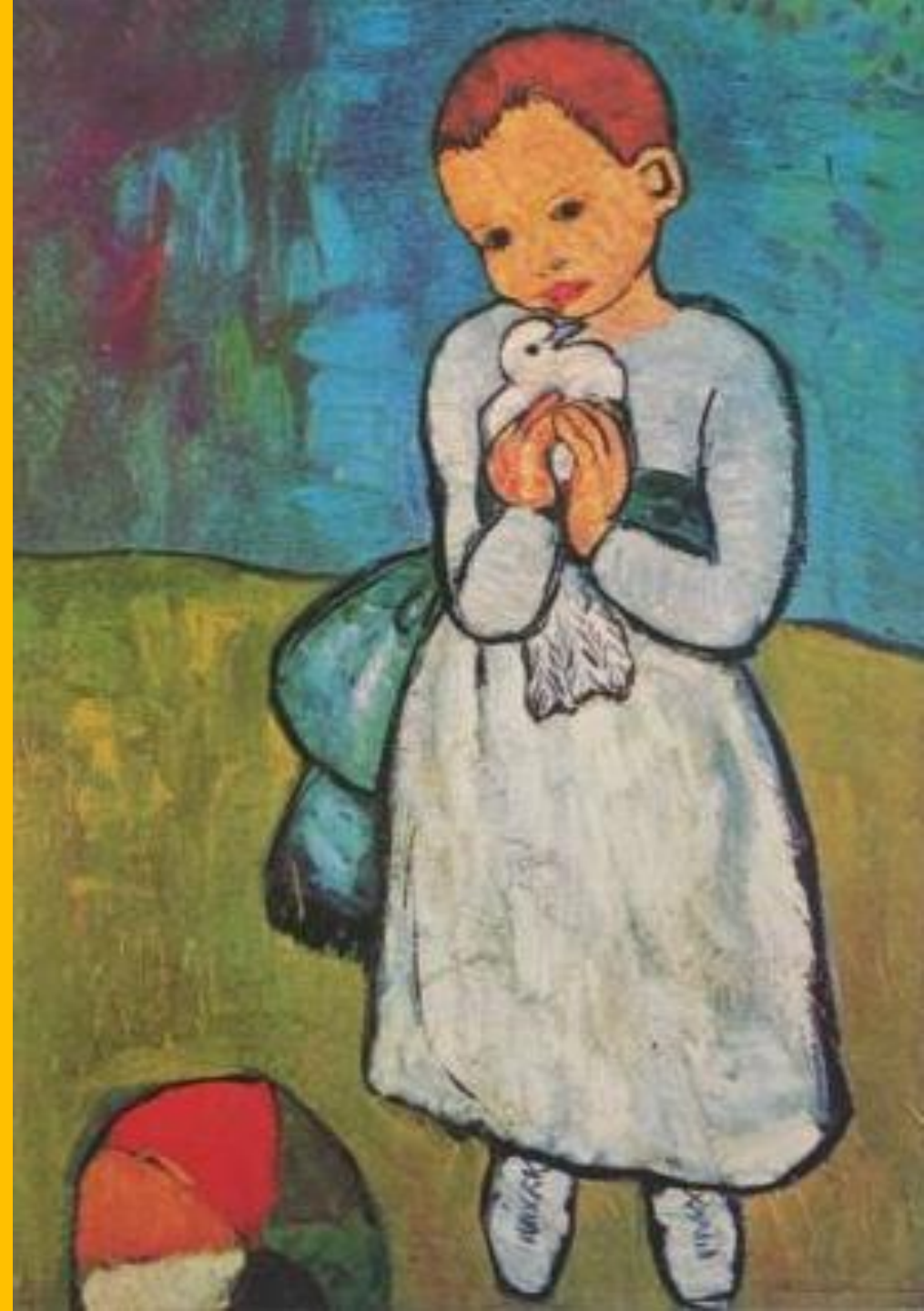
Objects can have special meanings

**A heart can mean love, courage
Grapes can mean luxury, happiness**

How to spot Symbols in Art:

3. Look at animals

“Child holding dove” by Pablo Picasso





Animals can show ideas

A lion can mean power, courage

A butterfly can mean beauty, change

What can a dove mean?

How to spot Symbols in Art:

The background of the slide is the painting 'The Starry Night' by Vincent Van Gogh. It depicts a night scene with a turbulent, swirling blue sky filled with bright, glowing yellow stars and a crescent moon. The foreground shows dark, rolling hills and a small town with a prominent church spire. The overall style is characterized by visible, expressive brushstrokes.

4. Look at nature

"Starry Night" by Vincent Van Gogh



**The sun, stars, rain,
can all show feelings**

**A sun can mean hope
Stars can mean dreams, thoughts and emotions**

How to spot Symbols in Art:

5.
Ask: What
The artist is trying to say?

“The two Fridas” by Frida Kahlo



The background of the slide is a reproduction of Frida Kahlo's painting 'Two Fridas'. It depicts two versions of herself sitting side-by-side against a stormy, grey sky. The Frida on the left is dressed in traditional white lace and a pink skirt, holding a pair of scissors. The Frida on the right is in a blue and yellow dress. Both have their hearts exposed, and a single red vein connects the two hearts, symbolizing emotional connection and shared pain.

Symbols help us understand the message

**What feeling do you get?
Do you see that she feels like 2 different people?**



**Can YOU think
of a symbol
to use in an art project?**

A ct

R esponsibly

T oday